

COMPUTERSHARE CHANGE A LIFE CYCLE



CHANGE A LIFE CYCLE NEWSLETTER

APRIL 2008

CHANGE A LIFE CYCLE RECCE

We have just completed an exciting recce of our Change-a-Life Cycle route and we look forward to hosting you on this must-do event! Having covered the entire 450 km route along the Zambezi river by vehicle and bike - through northern Zimbabwe, Botswana, the Caprivi strip and Zambia - we can report that we are thoroughly impressed with the roads and the friendliness of the local people.

We were particularly delighted with the attitude of border officials at the 10 border posts we passed through - we were whisked to the front of queues and greeted with huge excitement as the advance guard of our much-awaited event.

Our recce coincided with the aftermath of the Zimbabwe elections, and despite the terrible political turmoil, the people we met were warm, hospitable, and delighted to be supporting us. Victoria Falls remains a tranquil tourist haven and it was uplifting to see such positive spirit, despite what people are going through.

Victoria Falls is truly one of the world's high spots with its stunning beauty and adrenalin-pumping activities. The hotels and lodges that will be hosting us pulled out all the stops - and impress us they did! From the Elephant Hills, which will host a wonderful welcome function for us on September 4th, to Caprivi River Lodge, which is rushing to complete its fabulous refurbishment in time, we assure you that you will not be disappointed.

Nor will you be disappointed by the service and attention to detail provided by our partners, Wilderness Safaris. With their professionalism and experience in organising similar cycle events, you can be assured that every detail has been attended to. We are delighted to be working with them.

One of our tasks was to thoroughly check out the last day's route of 210 km. Yes it is very loooong, but we are happy to report that the road is flat - apart from a 40 km undulating stretch before lunch. To ensure that you enjoy yourselves, we've arranged a fabulous lunch on the banks of the Zambezi - a welcome respite for tired legs and buttocks! If you find the 210 km too formidable, we will be providing transport to an alternative start point 100 km into the route. We assure you no-one will know where you started from!

And now we are bubbling over with enthusiasm to get you to join us! Places are filling up fast so please contact Linda Janse van Rensburg on (011) 370 5362 or linda.jansevanrensburg@computershare.co.za to secure your place. Computershare will cover all costs of participating - what you need to do is raise a minimum of R20 000 in sponsorship. We will be officially registering cyclists at our launch event at the JSE on May 28th, But do secure your place!

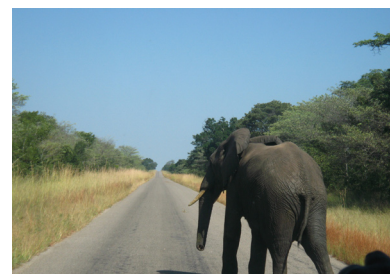
We so look forward to sharing this event with you and to raising funds for the Mike Thomson Change A Life Trust and Children in the Wilderness. Do join us in helping to change people's lives...

Yours in cycling

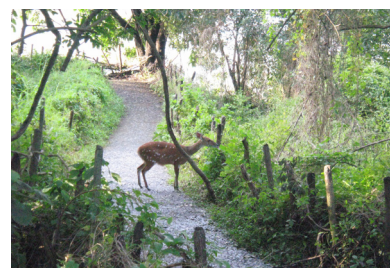
Ursula du Plooy
Executive Director > Sales, Marketing and Relationships



Victoria Falls



Road to Chobe



Victoria Falls - path through rain forest



Victoria Falls Hotel



Victoria Falls Hotel



Change a life

Computershare